

UPPER MISSISSIPPI RIVER POOL 10

INITIAL INCIDENT ACTION PLAN (IAP)



This Initial Incident Action Plan is developed to aid in initiating a timely and effective response to spills of oil and other hazardous materials in Pool 10 of the Upper Mississippi River. It is intended to be used during Operational Period #1 of response only at the discretion of the Incident Commander. It is not intended to supersede the direction of the Incident Commander or eliminate the need for ongoing communication during a response.

IAP Approved by Incident Commander(s):

ORG	NAME		DATE/TIME
_____	_____	First Local IC (911, Fire Dept., County Emergency Mgr.)	_____
_____	_____	First Responding State (IA DNR or WI DNR)	_____
_____	_____	FOSC; USCG (Vessel or facility), EPA (facility, train or other)	_____
_____	_____	USFWS Lead Representative	_____
_____	_____	IA DNR /WI DNR Lead Representative	_____

Upper Mississippi River Refuge, Pool 10 INITIAL INCIDENT ACTION PLAN

EXECUTIVE SUMMARY

In order to best prepare for oil and hazardous material spills in Pool 10 of the Upper Mississippi River, an interagency team comprised of representatives from the US Environmental Protection Agency (US EPA), US Fish and Wildlife Service (USFWS), US Coast Guard, and other federal, state, local agencies, and private sector, identified the need for a specialized planning document that would: 1) describe the roles that agencies and other entities would likely play in an incident, and 2) give responders a mechanism to help organize both in advance and during a response. This planning tool would also help multiple agencies to coordinate their operations and resources and make effective and efficient use of their personnel, supplies and time.

To help meet these needs, the enclosed Incident Action Plan (IAP) document was created. The plan has been tailored to identify the forms most likely to be used in a Pool 10 response and includes potential objectives for Pool 10 as well as a detailed emergency contact list. The plan provides a concise and coherent means of capturing and communicating the overall incident priorities, objectives and strategies in the context of both operational and support activities.

The IAP was developed to aid the implementation of the Incident Command System (ICS). During an incident, the ICS emphasizes orderly and systematic planning and this document is intended to be the central tool for planning during the Operational Period #1 of response at the discretion of the Incident Commander (IC). The plan is not intended to supersede the direction or authority of the IC, or to preclude communication or flexibility in response. Incidents vary in their kind, complexity, size and requirements for detailed or written plan. The level of detail required in an Incident Action Plan will vary according to the size and complexity of the response. After the operational period #1 of an incident, it is expected that this IAP will be superseded by a response specific IAP as needed.

The IAP was developed to be consistent with, and support, existing plans and procedures including the Region 5 RCP/ACP, the Upper Mississippi River Spill Response Plan, the Upper Mississippi River National Wildlife and Fish Refuge Spill Contingency Plan and Pool 10 Response Strategies, state response plans and local response plans.

TABLE OF CONTENTS

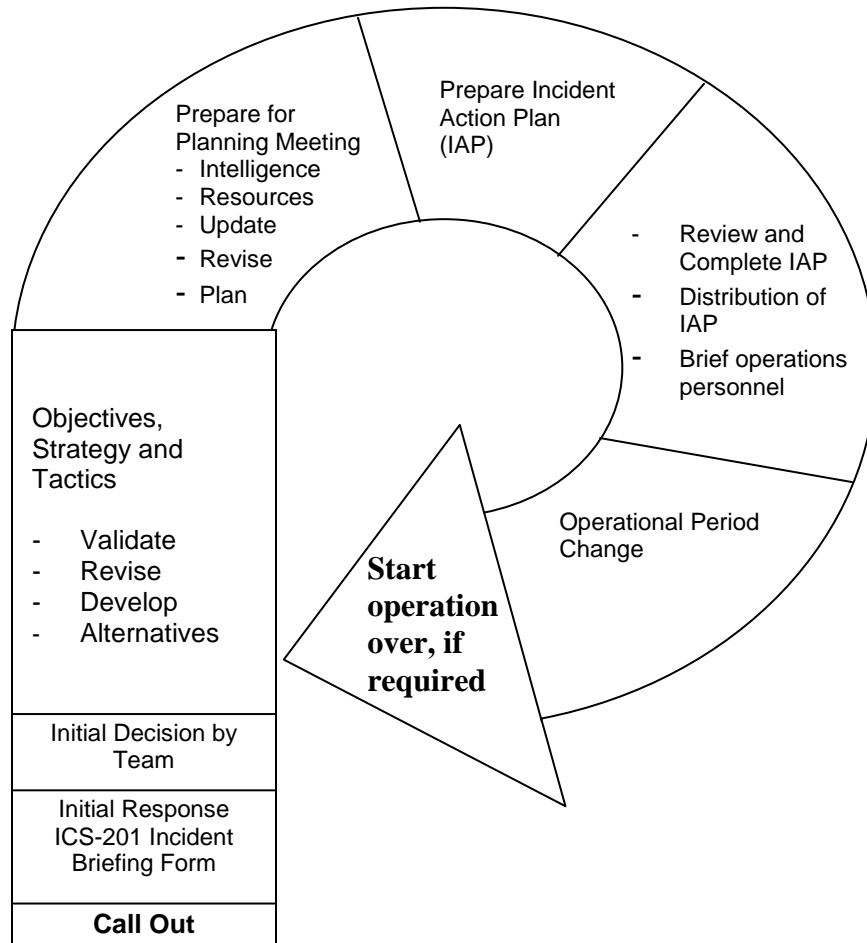
<u>Background IAP Planning “P”</u> -----	IAP-2
<u>Agency General Spill Roles and Responsibilities for UMR Pool 10</u> -----	IAP-3
IAP Template Forms	
1. <u>Action Plan Cover Sheet</u> ----- (ICS Form 200)	IAP-6
2. <u>Incident Objectives</u> ----- (ICS Form 202)	IAP-7
3. <u>Work Analysis Matrix</u> ----- (ICS Form 234)	IAP-8
4. <u>Incident Organization Chart</u> ----- (ICS Form 207)	IAP-12
5. <u>Assignment List</u> ----- (ICS Form 204)	IAP-13
6. <u>Incident Communication Plan</u> ----- (ICS Form 205)	IAP-21
8. <u>Emergency Contact List</u> -----	IAP-22
9. <u>Medical Plan</u> ----- (ICS Form 206)	IAP-23
10. <u>Health and Safety Message</u> ----- (ICS Form 223)	IAP-24
11. <u>Unit Activity Log</u> ----- (ICS Form 214)	IAP-25

Incident Action Planning Process

In the incident command system (ICS), considerable emphasis is placed on developing effective Incident Action Plans (IAP). A planning process has been developed as a part of the ICS to assist planners in the development of a plan in an orderly and systematic manner. Not all incidents require detailed written plans. Recognizing this, the following planning process provides a series of basic planning steps, which are generally appropriate for use in any incident situation. The determination of the need for written IAPs and attachments/forms is based on the requirements of the incident, and the judgment of the Incident Commander. The Planning Section Chief prepares the Incident Action Plan with input from the appropriate sections and units of the Incident Management Team. It should be written at the outset of the response and revised continually throughout the response.

The diagram below shows the process and steps involved to develop an IAP. The IAP included in this document is intended to help guide response through the Operational Period #1 cycle of an incident on Pool 10 of the Upper Mississippi River.

The Planning Cycle and Daily flow of events:



NOTE: The cycle above assumes the first operational period. It can be adjusted to operational shifts of any duration.

Agency General Spill Roles and Responsibilities for UMR Pool 10

Agencies	General Roles and Responsibilities
Responsible Party/Facility/Industry	<p>The spiller, or responsible party (RP), has the primary responsibility to conduct spill cleanup, following the procedures listed in the facility response plan. The first response action of the RP is making notification of an incident to appropriate other responders of the incident, according to law and the RP's own response plan. The RP conducts whatever response actions are necessary and for which their personnel are trained and equipped. The RP is required to have authorized and qualified individuals available 24 hours a day to respond to a spill. The RP should also have sufficient funds available to cover the cost of pollution response to the limit of liability for the vessel or facility. As the priorities of an incident evolve, they often include off-site and environmental concerns. The RP has the lead role in responding to these concerns, under the oversight of state or federal agencies. The RP is also liable for restoring or replacing natural resources which may be injured or lost due to the spill, and should coordinate with the natural resource trustees (via the NRDAR Liaison in the IC) as part of the Natural Resource Damage Assessment & Restoration process. The RP will be represented at the command level of the response organization to represent their interests and to help coordinate assets and response actions. The RP should conduct inquiries into the cause of an incident. This is often done with the participation or oversight of state or federal agencies such as the Occupational Safety and Health Administration or Department of Transportation. The RP should conduct a critique of their response to an incident and revise prevention, preparedness, and response measures accordingly. If the responsible party does not respond properly, the On-Scene Coordinator shall take appropriate response actions and should notify the responsible party of the potential liability for federal response costs incurred by the On-Scene Coordinator pursuant to the OPA and CWA.</p>
Local Fire, Police, Sheriff & Hazmat Teams	<p>Local units of government typically have the primary role in protecting the public's safety and property from a spill through police and fire department response. During the initial stages of an incident, when life and safety issues are paramount, local officials (Fire/Police/Sheriff) will be "in charge" of the response to an incident until such time that they decide to enter into a unified command. These teams will not perform cleanup work, but will rather stabilize public safety threats during incidents and turn incidents over to responsible parties or to the state agencies (WI DNR, IA DNR) for cleanup.</p>
Counties & Emergency Management	<p>During the response and recovery stages of an event, the County Emergency Management acts as a liaison between federal, state, and local units of government to promote speedy access to emergency resources and recovery funding.</p> <p>In Iowa, county emergency managers organize under a regional manager within the Iowa County Emergency Management Association.</p> <p>In Wisconsin, county emergency managers organize under a regional manager within the Wisconsin Division of Emergency Management (WEM), which is under the Wisconsin Department of Military Affairs.</p>
Wisconsin Department of Natural Resources (WI DNR)	<p>During a spill response, appropriate DNR staff will be contacted (local biologists, technicians, law enforcement officers, Wildlife Health, Regional Spill Coordinators, and Public Affairs) and establish a response protocol delineating specific roles and responsibilities of each program. Determine what level of response, if any, is necessary to protect and respond to potentially threatened or injured fish, wildlife, and sensitive environments. If appropriate, WDNR personnel will contact the On-Scene Coordinator (OSC) to request participation in the spill response. Local WDNR staff, along with USFWS personnel, ensures that resources at risk are clearly identified and communicated to the OSC. Participate in the ICS command structure, as necessary. The USFWS and WDNR have joint responsibilities for overseeing any activity that involves the handling of wildlife and the WDNR's Wildlife Rehabilitation Liaison will coordinate with area wildlife rehabilitators as necessary. The WDNR's Wildlife Veterinarian will provide veterinary support and expertise as necessary.</p> <p>The Department is the lead coordinating agency for Emergency Support Function 10 (Oil and Hazardous Materials) as part of the Wisconsin Response Plan. The primary responsibility of ESF 10 is to ensure that the State has a coordinated response to releases of oil and other hazardous materials that pose a threat to public health and safety and the environment. State Statute 292.11 is the enabling legislation defining the responsibility of the Department when dealing with hazardous substance release (also known as Spills Law). In order to help implement this law, the DNR spills program was established to provide technical assistance and support within the agency and to those outside the agency. Each DNR region has a spill coordinator specifically trained to help responsible parties, response agencies and other DNR staff when a spill occurs.</p> <p>If a responsible party is unable or unwilling to provide adequate response, the DNR has the authority to identify, locate, monitor, contain, remove or dispose of the hazardous substance or take any other emergency action which it deems appropriate under the circumstances. In addition, the department may enter any property, premises or place at any time for the purpose of taking removal or other emergency action if the entry is necessary to prevent increased damage to the air, land or waters of the state. Notice is not required if the delay would result in imminent risk to public health, safety or the environment. The DNR can then seek cost recovery for costs incurred to providing those services.</p> <p>As a natural resource trustee, the WI DNR works with USFWS and other co-trustees to assess damages to restore natural resources (as circumstances allow) lost or injured due to spill. Data acquired would be used to determine the extent of damage to natural resources, to develop restoration or replacement strategies, and to develop and submit a claim for damages to the Responsible Party to implement the most appropriate restoration actions.</p>

Agencies	General Roles and Responsibilities
Iowa Department of Natural Resources (IA DNR)	<p>The IA DNR Emergency Response and Homeland Security Unit provides technical assistance to local, state, and federal response agencies, regulated industries, and interested public during an incident. The unit coordinates technical assistance and over-site activities at larger incidents with DNR field office staff.</p> <p>As a natural resource trustee, the IA DNR works with USFWS and other co-trustees to assess damages to restore natural resources (as circumstances allow) lost or injured due to spill. Data acquired would be used to determine the extent of damage to natural resources, to develop restoration or replacement strategies, and to develop and submit a claim for damages to the Responsible Party to implement the most appropriate restoration actions.</p>
US Fish & Wildlife Service (USFWS)	<p>The USFWS is responsible for the conservation and management of lands and waters within Pool 10 of the Upper Mississippi River National Wildlife and Fish Refuge, migratory birds, federally-listed threatened and endangered species, and inter jurisdictional fishes, and the supporting habitats for these species. The USFWS with the IA DNR and the WI DNR have joint responsibilities for overseeing any activity that involves the handling of wildlife. The USFWS is also a trustee bureau of the U.S. Department of the Interior with Natural Resource Damage Assessment & Restoration (NRDAR) authorities and responsibilities to restore or replace natural resources injured or lost due to spills of oil or releases of hazardous substances. The USFWS fulfills these NRDAR responsibilities working with co-trustees (e.g., IA DNR, WI DNR) and Responsible Parties as a distinct process coordinated with the emergency response process.</p> <p><u>USFWS Upper Mississippi River National Wildlife & Fish Refuge (Refuge)</u></p> <ul style="list-style-type: none"> • The Refuge has management authority of 22,214 acres of land and water in Pool 10 (see http://www.fws.gov/refuge/Upper_Mississippi_River/map.html for maps). • The Refuge District Manager, Assistant District Manager, or Law Enforcement Officer is the initial Refuge point of contact for any spill response in Pool 10. The District Manager, Assistant District Manager, or Law Enforcement Officer will ensure that all other appropriate Refuge personnel are contacted and notified. • During a response, the District Manager (or designee) will establish a response protocol delineating specific roles and responsibilities of Refuge personnel. Coordination protocol with the IA DNR and WI DNR, and other resource agencies will also be established. • Refuge personnel will provide responders with specific information on fish, wildlife, and habitat resources within the Refuge, will provide recommendations for preventing or minimizing spill impacts to Refuge resources, and will consult on the best locations for response staging areas and access points within Refuge boundaries as consistent with the response strategies developed for Pool 10. <p><u>USFWS Environmental Contaminants:</u></p> <ul style="list-style-type: none"> • Environmental Contaminants biologists from Iowa and Wisconsin have spill response and natural resource damage assessment authority for the protection and restoration of trust resources in the States of Iowa and Wisconsin. • Environmental Contaminants biologists will implement the USFWS Contingency Plan and the Region 3 Cross Programmatic Spill Response Plan to support and provide assets to Refuge personnel as needed and requested from the Refuge. See http://www.fws.gov/contaminants/FWS_OSCP_05/FWSContingencyTOC.htm for plan materials. • Environmental Contaminants biologists can open a Pollution Fund Response Agreement (PFRA) with the USEPA or USCG to provide funding to support the USFWS response during an oil spill in navigable waters. The PRFA requires specific record keeping for expenditures. • Environmental Contaminants biologists can help fulfill Incident Command System (ICS) roles for emergency spill response as requested by the FOSC and the Refuge including Wildlife Branch operations and Environmental Unit activities. <ul style="list-style-type: none"> ○ The Wildlife Branch operations include supporting or overseeing wildlife reconnaissance, wildlife transport, wildlife recovery, wildlife morgue, wildlife deterrent, and wildlife rehabilitation. ○ Environmental Unit activities include identification of resources at risk, planning to avoid and minimize response related impacts, organizing shoreline clean up and assessment technique teams (SCAT), and conducting endangered species consultation. ○ Note that the USFWS does not necessarily perform all of these Wildlife Branch operational duties and Environmental Unit activities and that some items can be accomplished by other natural resource agencies, USDA Wildlife Services, or contractors hired by the Responsible Party. The exception being endangered species consultation for federally listed species can only be accomplished by the USFWS pursuant the Section 7 of the Endangered Species Act and the spills consultation Memorandum of Agreement. ○ Some of these fish and wildlife related duties and activities require permits from the State and USFWS. For instance it is unlawful to pursue or harm federally listed endangered species or salvage dead migratory birds without a specific permit. There are specific requirements for handling and transporting sick migratory birds without a permit. USFWS personnel maintain general permits for these kinds of duties and activities.

<p>US Department of Agriculture, Animal Plant Health Inspection Service, Wildlife Services (USDA WS)</p>	<p>USDA APHIS Wildlife Services has no intrinsic authorities of its own that directly apply to wildlife issues in a chemical or oil spill event. It does however, because of its other wildlife expertise, have extensive operational and technical capabilities to assist with proper humane capture, handling, hazing, transport, and other issues that typically arise in oil spill situations. The Agency implements sound and integrated surveillance, deterrence and capture techniques and transport as part of regular day to day work activities. In addition, USDA WS is an emergency response agency that operates under the National Response Framework (NRF) and participates in emergency response in all regions of the United States working closely with other federal, state, tribal and local governments, along with the private sector to provide assistance and coordination during all-hazards emergencies, including oil spills. The Agency has the capability to respond to an incident under the Surveillance and Emergency Response System (SERS). SERS, an essential component of the USDA Wildlife Services National Wildlife Disease Program, serves as the primary emergency response contact point within APHIS Wildlife Services. Incident Response Teams (IRT) are made up of wildlife biologists and specialists that act as first responders. Team members have current medical clearances for personal protective equipment, HAZWOPER training and other specialized training, extensive Incident Command System training and have been deployed to oil spill and other emergency response incidents.</p>
<p>US Environmental Protection Agency (US EPA) Region 5 and Region 7</p>	<p>US Environmental Protection Agency (EPA) Region 5 has jurisdiction on the east side of the Mississippi River (i.e. in Wisconsin); US EPA Region 7 has jurisdiction on the west side of the Mississippi River (i.e. in Iowa). US EPA provides Federal On-Scene Coordinators (FOSC) when an incident is federalized for spills originating from a source other than a vessel or marine transportation facility where:</p> <ul style="list-style-type: none"> • The FOSC is the lead federal official for spill response. • The FOSC is the point of contact for the coordination of federal efforts with those of the local response community. The FOSC will be in support of local command unless asked to assume control. • The FOSC shall, to the extent practicable, collect pertinent facts about the discharge or release, such as its source and cause; the identification of potentially responsible parties; the nature, amount, and location of discharged or released materials; the probable direction and time of travel of discharged or released materials; whether the discharge is a worst case discharge; the pathways to human and environmental exposure; the potential impact on human health, welfare, and safety and the environment; whether the discharge or release poses a substantial threat to the public health or welfare; the potential impact on natural resources and property which may be affected; priorities for protecting human health and welfare and the environment; and appropriate cost documentation. <p>The FOSC shall ensure that the Natural Resource Trustees are promptly notified of discharges or releases and shall coordinate all response actions with the trustees. The FOSC should ensure that all appropriate public and private interests are kept informed and that their concerns are considered throughout a response, to the extent practicable.</p>
<p>US Army Corps of Engineers (US ACE)</p>	<p>US Army Corps of Engineers (US ACE) staff are not trained or permitted to take part in spill response activity. Locks and dams may be accessed for use by responders, pending Lockmaster approval.</p>
<p>US Coast Guard (USCG)</p>	<p>The USCG provides Federal On-Scene Coordinators (FOSC) for oil discharges, when an incident is federalized and the source is either a vessel or marine transport related facility where:</p> <ul style="list-style-type: none"> • The FOSC is the lead federal official for spill response. • The FOSC is the point of contact for the coordination of federal efforts with those of the local response community. The FOSC will be in support of local command unless asked to assume control. • The FOSC shall, to the extent practicable, collect pertinent facts about the discharge or release, such as its source and cause; the identification of potentially responsible parties; the nature, amount, and location of discharged or released materials; the probable direction and time of travel of discharged or released materials; whether the discharge is a worst case discharge; the pathways to human and environmental exposure; the potential impact on human health, welfare, and safety and the environment; whether the discharge or release poses a substantial threat to the public health or welfare; the potential impact on natural resources and property which may be affected; priorities for protecting human health and welfare and the environment; and appropriate cost documentation. <p>The FOSC shall ensure that the Natural Resource Trustees that may be impacted are promptly notified of discharges or releases. The FOSC should ensure that all appropriate public and private interests are kept informed and that their concerns are considered throughout a response, to the extent practicable.</p>

Incident Name _____	2. Operational Period to be covered by IAP (Date/Time) From: <u>DISCOVERY</u> To: <u>OPERATIONAL PERIOD #1</u>	IAP COVER SHEET UMR Pool 10
------------------------	---	--

INITIAL INCIDENT ACTION PLAN

The items below are included in this Incident Action Plan

- [ICS 202](#) Response Objectives. (Select from list as appropriate)
- [ICS 234](#) Work Analysis Matrix. (Incident specific objectives from ICS 202, strategies and tactics/tasks)
- [ICS 207](#) Organization Chart.
- [ICS 204](#) Assignment List. (Fill in operations personnel contact name, incident-specific assignments & resource summary)
- [ICS 205](#) Incident Communications Plan. (Phone/Radio Contact list)
- [ICS 206](#) Medical Plan. (Medical aid stations, hospitals and emergency procedures)
- [ICS 223](#) Health and Safety Message. (General Safety Message and Major Hazards/ Risks)
- [ICS 214](#) Unit Activity Log. (Details of unit activity, including team activity or individual activity)

Other Attachments

The following attachments are not included in the IAP. Please check and include additional forms, as needed.

- [ICS 208 Site Safety and Control Plan\(s\)**](#) **note: unless otherwise specified, every organization shall respond in accordance with the safety policies and procedures of their respective organizations
- [ICS 213 General Message Form](#) (for issuing approved information releases from the IC to the JPIC. (PIO's))
- [ICS 225 Maps / Charts](#) (See [Pool 10 Overview Strategy Map](#) and [USACE Navigational Charts](#). Select and add maps, as necessary)
- [ICS 232 Resources at Risk Summary](#) (Sensitive areas list of priorities. See [Inland Sensitivity Atlas Maps](#) & [Pool 10 Overview Strategy Map](#). Add tables or maps, as necessary)
- [Weather Forecasts / River flow – currents – conditions](#)
- _____
- _____

General Incident Summary

Incident Information and Incident Status

(Include Incident location, latitude/longitude, estimated quantity spilled, spill rate etc.)

Prepared By: (Name/Title) _____	Date/Time: _____
Approved by: (Name/Title) _____	Date/Time: _____

Incident name: _____	ICS – 202 INCIDENT OBJECTIVES UMR Pool 10
--------------------------------	--

Objectives
1. Develop a response structure.
2. Establish Unified Command and establish an Incident Command Post (via County Emergency Management).
3. Ensure the health and safety of the public and response personnel.
4. Provide and manage necessary communications.
5. Identify the Responsible Party and determine ability to respond to the spill.
6. Conduct all the appropriate notifications (especially the USFWS), including notifications to downstream communities.
7. Inform and update the community and public.
8. Secure the incident scene, restrict river traffic as necessary and secure all evidence.
9. Conduct response operations to control/stop the source of the spill, contain, recover or exclude released material in Pool 10 & downstream and minimize response related environmental impacts.
10. Evaluate resources-at-risk and protect downstream sensitive resources and minimize response related environmental impacts.
11. Coordinate wildlife reconnaissance and recovery actions and appropriate rehabilitation procedures with natural resource trustees.
12. Monitor releases to the environment.
13. Use monitoring results to inform and support public safety personnel and the residents including commercial and recreational boating and temporarily moored houseboats.
14. Coordinate response actions and resource information with natural resource trustees and the Natural Resource Damage Assessment & Restoration (NRDAR) process.
15. Coordinate operations to evaluate impact to Mississippi River Pool 10, and potentially impacted residents, water intakes and resources downstream.
16.

Incident name:

ICS – 234 WORK ANALYSIS MATRIX
UMR Pool 10

Objectives <i>Desired Outcome</i>		Recommended Strategies <i>General Plan and Direction</i>	Recommended Tactics or Tasks <i>How, Who, What, Where, When</i>	Status <i>Operational Period # 1</i>	
UNIFIED COMMAND	UNIFIED COMMAND	Develop a response structure	<input type="checkbox"/> Finding out viable Responsible Party <input type="checkbox"/> Integrate company into the Unified Command (Usually as a Liaison Officer)	<input type="checkbox"/> Determine Responsible Parties (RP) <input type="checkbox"/> Set strategies and tactics with expected time frame with responsible party and their contractor <input type="checkbox"/> Hire a response contractor(s) if RP not adequately responding <input type="checkbox"/> Open Oil Pollution fund to conduct clean up and oversight of RPs if needed	_____
		Establish Unified Command and establish Incident Command post and/or Emergency Operations Centers	<input type="checkbox"/> Integrate organizations into ICS <input type="checkbox"/> Develop the IAP	<input type="checkbox"/> Develop feasible response alternatives <input type="checkbox"/> For technical assistance or funding, request help from Federal agencies- USCG or US EPA <input type="checkbox"/> For technical assistance, request help from State agencies- WI DNR and/or IA DNR	_____
	SAFETY	Ensure protection of health and safety of the public and response personnel	<input type="checkbox"/> Establish road, rail, and airspace controls <input type="checkbox"/> Establish shore land perimeter control areas <input type="checkbox"/> Temporally shut down public boat launches and tour boats if necessary	<input type="checkbox"/> Review data with health experts	_____
			<input type="checkbox"/> Develop and implement an all-agency staff safety plan <input type="checkbox"/> Written HASP (if hazmat or more than one operational period) <input type="checkbox"/> Prepare Boat Safety Check List and Float Plan for boat crews	<input type="checkbox"/> Assign a safety officer (s)	_____
			<input type="checkbox"/> Evacuation / Shelter-in-place and warnings of citizens at risk <input type="checkbox"/> Notify and evacuate if necessary house boats and boat house owners and occupants	<input type="checkbox"/> Local law enforcement, USCG, USFWS law enforcement and state conservation officers and wardens temporally shut down impacted areas, boat ramps, and other sites used by the public <input type="checkbox"/> USCG temporally shut down river traffic if necessary <input type="checkbox"/> County and state emergency managers and local Sheriff provide emergency communications to impacted public	_____
	PUBLIC AFFAIRS	Ensure decision makers and the public are fully informed throughout the incident response	<input type="checkbox"/> Evacuation / Shelter-in-place and warnings of citizens at risk <input type="checkbox"/> Notify and evacuate if necessary house boats and boat house owners and occupants	<input type="checkbox"/> Local law enforcement, USCG, USFWS law enforcement and state conservation officers and wardens temporally shut down impacted areas, boat ramps, and other sites used by the public <input type="checkbox"/> USCG temporally shut down river traffic if necessary <input type="checkbox"/> County and state emergency managers and local Sheriff provide emergency communications to impacted public	_____
	LIAISON	Provide Notification to all impacted communities, states, federal agencies including downstream notifications	<input type="checkbox"/> Ensure notifications to principal partners, local, state, federal responders and land owners such as USFWS and any tribes. <input type="checkbox"/> Ensure notifications to downstream states, municipalities, drinking water intakes, and economically sensitive businesses	<input type="checkbox"/> Assign person to track proper notifications <input type="checkbox"/> Contact private and public water supply utilities. <input type="checkbox"/> Follow Upper Mississippi Response Plan Notification List (UMR field guide and draft IAP phone list) <input type="checkbox"/> Conduct spill trajectory and time-of-travel to predict downstream impacts	_____
			<input type="checkbox"/> Issue Federal Notice of Interest to RPs <input type="checkbox"/> USFWS and WI DNR and/or IA DNR identifies the liaison representing the natural resource trustees	<input type="checkbox"/> Assign Public Information Officers to specific locations <input type="checkbox"/> Submit updates and situation reports at requested times (sitreps) <input type="checkbox"/> Provide Governor's briefings <input type="checkbox"/> Reactive: respond to media inquiries	_____
	PUBLIC INFORMATION	Inform and Update the community and public	<input type="checkbox"/> Establish interagency and JPIC - PIO liaisons. <input type="checkbox"/> Develop a multi-agency communications plan <input type="checkbox"/> Provide Information resources to all organization needs <input type="checkbox"/> Provide information resources to ICPs and EOCs (and JPIC) <input type="checkbox"/> Provide timely situation updates to SEOC or local EOCs	<input type="checkbox"/> Assign Public Information Officers to specific locations <input type="checkbox"/> Submit updates and situation reports at requested times (sitreps) <input type="checkbox"/> Provide Governor's briefings <input type="checkbox"/> Reactive: respond to media inquiries	_____
			<input type="checkbox"/> _____ <input type="checkbox"/> _____	<input type="checkbox"/> _____ <input type="checkbox"/> _____	_____

Objectives <i>Desired Outcome</i>		Recommended Strategies <i>General Plan and Direction</i>	Recommended Tactics or Tasks <i>How, Who, What, Where, When</i>	Status <i>Operational Period # 1</i>	
OPERATION SECTION	LAW ENFORCEMENT	Secure the incident scene and secure all evidence	<input type="checkbox"/> Establish river traffic control, river-traffic evacuation, no-boating area. <input type="checkbox"/> Secure scene immediately <input type="checkbox"/> Collect evidence <input type="checkbox"/> Prevent or minimize movement of evidence	<input type="checkbox"/> USCG / Sheriff lead on River Traffic Mgmt. <input type="checkbox"/> Police / Sheriff lead on road and rail traffic control <input type="checkbox"/> Collect photo evidence and document the scene <input type="checkbox"/> Coordinate with USFWS law enforcement and state conservation officers and wardens to ensure collection and storage of evidence to enforce federal and state wildlife laws	_____
	CONTAIN RELEASE	Conduct operations to stop the spill, contain, recover or exclude released material in Pool 10 and downstream	<input type="checkbox"/> Mobilize company responders, local spill COOP, first responders, county emergency government and hazmat teams, state and federal responders and their contractors <input type="checkbox"/> Utilize company and locally stored equipment such as oil spill boom, sorbents, tanker trucks, vacuum units, oil collection equipment or pre-staged response equipment <input type="checkbox"/> Mobilize local personnel and resources <input type="checkbox"/> Activate Spill Response Contractors (if company response too slow or inadequate) <input type="checkbox"/> Activate oil boom collection and recovery plan	<input type="checkbox"/> Contain and stabilize oil-sources. <input type="checkbox"/> Establish ignition source controls in hot zone <input type="checkbox"/> Safely collect materials without creating nuisance conditions <input type="checkbox"/> Implement an oil recovery plan <input type="checkbox"/> Establish parameter and hot zone <input type="checkbox"/> Deflect spilled material into Lock Chamber for collection. Utilize Lock and Dam Master and provide formal request from Federal OSC <input type="checkbox"/> Utilize barges to divert or collect spilled material <input type="checkbox"/> Evaluate the control of river level to facilitate spilled product collection and control (note: changing levels can cause larger smear zones)	_____
	RECOVER & REHABILITATE	Implement recovery actions and appropriate rehabilitation procedures with natural resource trustees	<input type="checkbox"/> Establish Operations Section Wildlife Branch to respond to oiled wildlife	<input type="checkbox"/> USFWS and/or state resource managers will implement the following Plans, as necessary: - "Wildlife Reconnaissance and Recovery Plan" to guide the finding and capture of oiled animals - "Wildlife Stabilization and Transport Plan" to provide initial veterinary care for recovered oiled wildlife and to transport animals to rehabilitation areas <input type="checkbox"/> USDA APHIS WS or other resource managers will oversee recovery of oiled wildlife and hazing operations <input type="checkbox"/> USFWS and/or state resource managers will oversee wildlife care and rehabilitation of oiled wildlife, as necessary <input type="checkbox"/> Wildlife Branch Director will ensure the RP contracts with a licensed wildlife rehabilitation organization to provide rehabilitation and other professional services	_____
	RECONNAISSANCE & MONITORING	Conduct operations to monitor releases to the environment to support public safety personnel and the residents including commercial and recreational boating, and temporarily moored houseboats	<input type="checkbox"/> Reconnaissance by IC organization staff, (reminder need safety plan) <input type="checkbox"/> Reconnaissance by compilation of information by others <input type="checkbox"/> Joint reconnaissance with local authorities <input type="checkbox"/> Air- flight reconnaissance and reporting	<input type="checkbox"/> Establish & deploy Reconnaissance Team(s) <input type="checkbox"/> Consider variety of resources for reconnaissance such as local, state, federal or private air recon, UASCE resources for reconnaissance, USACE Hydraulics personnel, NOAA, or private resources to provide spill trajectories <input type="checkbox"/> Wildlife Reconnaissance and Recovery Teams provide real time field situational updates on the location of oil and related environmental impacts to the Planning Section Environmental Unit to help direct Shoreline Cleanup Assessment Technique (SCAT)	_____
			<input type="checkbox"/> Conduct air monitoring and water sampling <input type="checkbox"/> Conduct monitoring with the Planning Section's Environmental Unit and the NRDAR Liaison.	<input type="checkbox"/> Conduct perimeter air sampling, water sampling at scene and down river <input type="checkbox"/> Provide environmental monitoring data and information as part of regular IC briefings, which include the Environmental Unit and the NRDAR Liaison	_____
		<input type="checkbox"/> _____ <input type="checkbox"/> _____	<input type="checkbox"/> _____ <input type="checkbox"/> _____	_____	

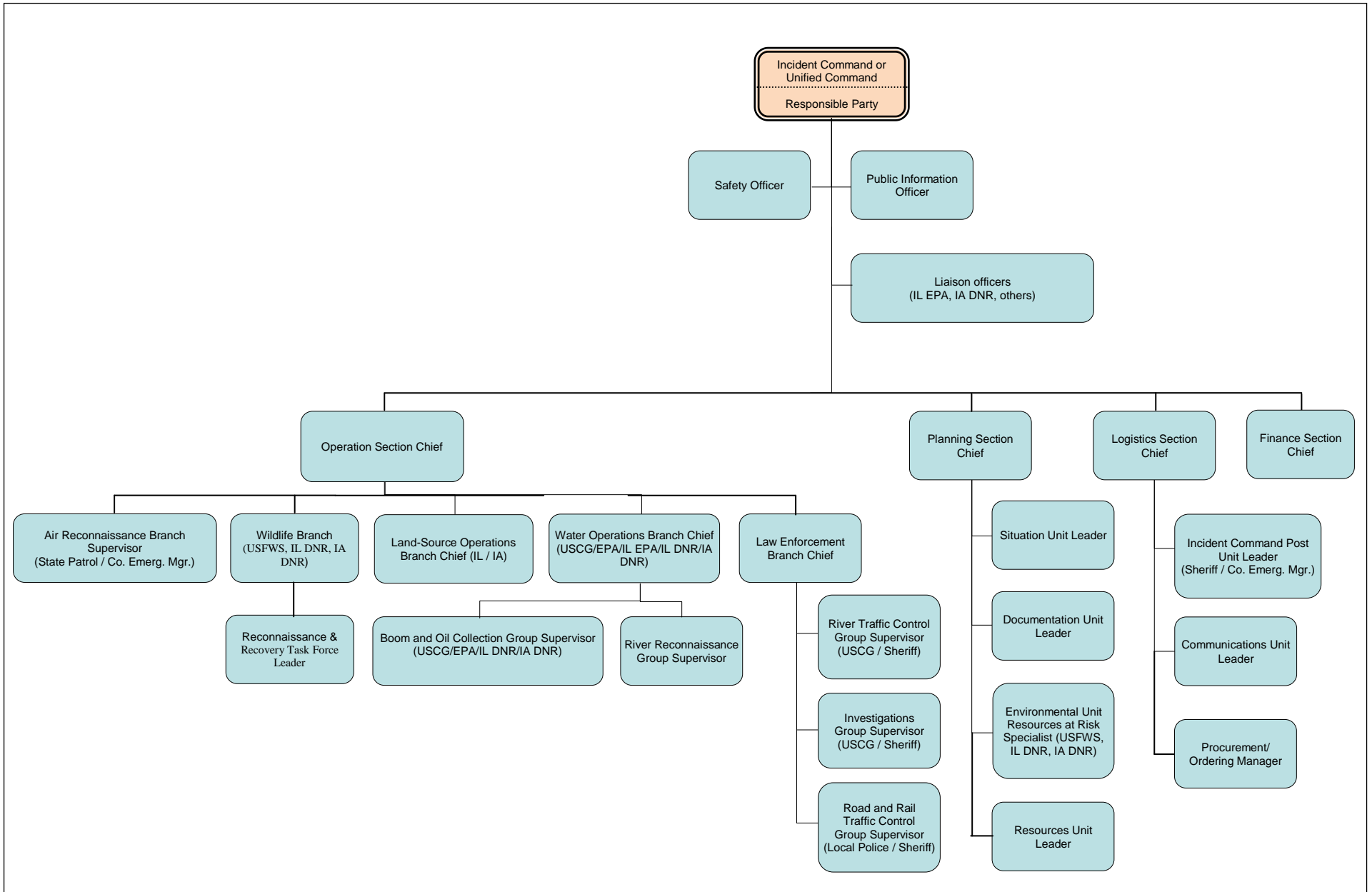
Objectives <i>Desired Outcome</i>		Recommended Strategies <i>General Plan and Direction</i>	Recommended Tactics or Tasks <i>How, Who, What, Where, When</i>	Status <i>Operational Period # 1</i>
PLANNING SECTION	ENVIRONMENTAL	<p>Establish a wildlife branch within Operations section and an Environmental unit within planning section if oiled wildlife is observed</p> <input type="checkbox"/> Establish an Environmental Unit within the Planning Section, with an emphasis on "Resources at Risk Specialists" <input type="checkbox"/> Establish a Wildlife Branch within the Operations Section if oiling of wildlife is observed or predicted	<input type="checkbox"/> Request assistance from the USFWS and WI DNR or IA DNR. Open up the Oil Spill Liability Trust Fund (OSLTF) for a Pollution Removal Fund Authorization (PRFA). <input type="checkbox"/> Schedule an oiled-wildlife tactics meeting <input type="checkbox"/> Initiate Endangered Species Act Section 7 emergency consultation. <input type="checkbox"/> Establish linkage between Planning Section Environmental Unit and the Operations Sections for technical assistance on methods to avoid and minimize response related injury to natural resources.	_____
		<input type="checkbox"/> Conduct spill modeling and spill trajectories <input type="checkbox"/> Develop a monitoring plan for water quality	<input type="checkbox"/> Provide info on how to assess to local authorities <input type="checkbox"/> Contact air & water experts on agency call back lists (examples include hydraulic personnel, state water division contacts, biologists)	_____
	RESOURCES AT RISK	<input type="checkbox"/> Planning Section's Environmental Unit identifies and evaluates sensitive resources.	<input type="checkbox"/> USFWS and state resource managers will identify and evaluate sensitive natural resources, including seasonal and site-specific conditions. <input type="checkbox"/> USFWS and state resource managers will make a preliminary determination of the extent to which planned response actions may affect natural resources and suggest measures to avoid and minimize impacts. <input type="checkbox"/> USFWS and state resource managers will recommend and advise implementation of Response Strategies developed for Pool 10 <input type="checkbox"/> USFWS and state resource managers will develop a "Wildlife Reconnaissance and Recovery Plan" if oiled wildlife is observed or predicted, as necessary <input type="checkbox"/> USFWS and state resource managers will develop a "Wildlife Hazing Plan" if wildlife is attracted to oiled habitats, as necessary. <input type="checkbox"/> USFWS and/or state resource managers will develop and assist implementation of a "Wildlife Stabilization and Transport Plan" to provide initial veterinary care for recovered oiled wildlife and to transport animals to rehabilitation areas, as necessary <input type="checkbox"/> USFWS and/or state resource managers will develop and assist implementation of a "Wildlife rehabilitation Plan" for oiled wildlife, as necessary. <input type="checkbox"/> See Pool 10 Site-Specific Response Strategies (Overview Map) and ISA Maps included in the Pool 10 GRP CD.	_____
		<input type="checkbox"/> Establish a NRDAR Liaison in the Incident Command <input type="checkbox"/> Coordinate response plans and actions with the natural resource trustees and the Natural Resource Damage Assessment & Restoration process (NRDAR).	<input type="checkbox"/> Request the NRDAR Liaison to coordinate the natural resource trustees to make a preliminary determination of the need for emergency restoration <input type="checkbox"/> Coordinate collection, analysis, and results (including photo documentation) of environmental media (soils, sediments, water, etc.) and dead or dying fish and wildlife with the natural resource trustees via the NRDA Liaison. Trustees may collect ephemeral data.	_____
	DOCUMENTATION	<p>Ensure proper Documentation of the incident</p> <input type="checkbox"/> Establish a documentation unit to properly document response (at command post)	<input type="checkbox"/> Coordinate collection and documentation of evidence with USFWS, IA DNR, and WI DNR (as applicable) for respective fish and wildlife enforcement actions and potential NRDAR actions <input type="checkbox"/> Collect agency evidence for identified enforcement issues <input type="checkbox"/> Track expenses for cost recovery	_____
	<input type="checkbox"/> Data management for ICS	<input type="checkbox"/> Assign staff to create maps, track personnel, catalog resources, etc.	_____	
RESOURCES	<p>Acquisition and delivery of resources such as equipment, materials etc.</p> <input type="checkbox"/> Develop a river traffic management plan	<input type="checkbox"/> Provide personnel with adequate safety equipment and initial and daily briefings <input type="checkbox"/> Provide clear guidance that each organization is responsible for safety protocol in first operational period	_____	
	<input type="checkbox"/> _____ <input type="checkbox"/> _____	<input type="checkbox"/> _____ <input type="checkbox"/> _____	_____	

Objectives <i>Desired Outcome</i>		Recommended Strategies <i>General Plan and Direction</i>	Recommended Tactics or Tasks <i>How, Who, What, Where, When</i>	Status <i>Operational Period # 1</i>
LOGISTICS SECTION	INCIDENT COMMAND POST	<p>Establish incident facilities including the command post, staging areas & other facilities as incident develops</p> <p><input type="checkbox"/> If HUMAN INJURY occurs- Immediately establish a Medical/EMS section in ICS</p>	<p><input type="checkbox"/> Consider establishing medical/EMS if persons threatened w/exposure</p>	_____
	COMMUNICATION	<p>Provide and manage communications</p> <p><input type="checkbox"/> Implement and maintain communications with all incident command posts, emergency operations centers and responders</p>	<p><input type="checkbox"/> Assign a communications coordinator (unit leader), make a phone list, etc.</p> <p><input type="checkbox"/> Request additional communication resources if needed</p>	_____
	PROCUREMENT	<p>Ensure procurement of materials and supplies & administer accounts receivable and payable to contract and noncontract vendors</p> <p><input type="checkbox"/> Establish a Procurement unit and Ensure procurement of materials and supplies</p>	<p><input type="checkbox"/> Ensure separate accounting of all contracts specifically related to the emergency incident and of all purchases within the enactment of the emergency incident management plan.</p> <p><input type="checkbox"/> Obtain authorization to initiate and finalize purchases</p> <p><input type="checkbox"/> Interpret and initiate contracts/agreements to minimize costs</p> <p><input type="checkbox"/> Maintain log of all purchases related to the incident and initiate the Procurement Summary Report</p>	_____
	_____	<input type="checkbox"/> _____ <input type="checkbox"/> _____	<input type="checkbox"/> _____ <input type="checkbox"/> _____	_____

Incident name: _____

ICS – 207 INCIDENT ORGANIZATION CHART UMR Pool 10

Initial Command Structure for the first operational period of an oil spill. [Click here to have a workable and printable version of the Organization Chart](#)



9. Operations Personnel						
Title	Name	Affiliation	Emergency Contact #	Contact # (s)		
_____	_____	_____	_____	_____		
_____	_____	_____	_____	_____		
_____	_____	_____	_____	_____		
_____	_____	_____	_____	_____		
_____	_____	_____	_____	_____		

Communications: Refer to the [Pool 10 Emergency Contact List](#) provided in this Incident Action Plan

10. Resource Summary (see UMR Spill Response Plan and Resource Manual for information on Spill Response and Cleanup Resources)						
ID	Resource Type	Description/ Location	Quantity	Size	Status	Notes/ Comments
_____	_____	_____	_____	_____	_____	_____
_____	_____	_____	_____	_____	_____	_____
_____	_____	_____	_____	_____	_____	_____
_____	_____	_____	_____	_____	_____	_____
_____	_____	_____	_____	_____	_____	_____

11. Additional Information	

Prepared By: (Name/Title) _____	Date/Time: _____
Approved by: (Name/Title) _____	Date/Time: _____

1. Incident name: _____	2. Operational Period # 1		ICS – 204 ASSIGNMENT LIST UMR Pool 10
	3. Section	Operations	
4. Division/Group	Containment		

5. Agencies Involved in Contain Release Group

Agencies that might play a role in Containment Group:

- Responsible Party/Facility/Industry/Contractors
- Counties & Emergency Management
- Local Fire, Police, Sheriff & Hazmat Teams
- Iowa Department of Natural Resources (IA DNR)
- Wisconsin Department of Natural Resources (WI DNR)
- US Fish and Wildlife Service (USFWS)
- US Environmental Protection Agency (US EPA) Region 5/Region 7
- US Coast Guard (USCG)

Agency General Roles and Responsibilities: Refer to the [Roles and Responsibilities](#) Table provided in this Incident Action Plan

6. Recommended Strategies and Tactics

- Mobilize company responders, local spill COOP, first responders, county emergency government and hazmat teams, state and federal responders and their contractors.
- Utilize company and locally stored equipment such as oil spill boom, sorbents, tanker trucks, vacuum units, oil collection equipment or pre-staged response equipment.
- Mobilize local personnel and resources.
- Activate Spill Response Contractors (if company response too slow or inadequate).
- Activate and implement oil boom collection and recovery plan.
- Contain and stabilize oil-sources.
- Establish ignition source controls in hot zone.
- Safely collect materials without creating nuisance conditions.
- Deflect spilled material into Lock Chamber for collection. Utilize Lock and Dam Master and provide formal request from Federal OSC.
- Utilize barges to divert or collect spilled material.
- Evaluate the control of river level to facilitate spilled product collection and control (note: changing levels can cause larger smear zones).

7. Incident-Specific Assignments

8. Special Instructions for Division/Group

9. Operations Personnel						
Title	Name	Affiliation	Emergency Contact #	Contact # (s)		
_____	_____	_____	_____	_____		
_____	_____	_____	_____	_____		
_____	_____	_____	_____	_____		
_____	_____	_____	_____	_____		
_____	_____	_____	_____	_____		

Communications: Refer to the [Pool 10 Emergency Contact List](#) provided in this Incident Action Plan

10. Resource Summary (see UMR Spill Response Plan and Resource Manual for information on Spill Response and Cleanup Resources)						
ID	Resource Type	Description/ Location	Quantity	Size	Status	Notes/ Comments
_____	_____	_____	_____	_____	_____	_____
_____	_____	_____	_____	_____	_____	_____
_____	_____	_____	_____	_____	_____	_____
_____	_____	_____	_____	_____	_____	_____
_____	_____	_____	_____	_____	_____	_____

11. Additional Information	

Prepared By: (Name/Title) _____	Date/Time: _____
Approved by: (Name/Title) _____	Date/Time: _____

1. Incident name: _____	2. Operational Period # 1		ICS – 204 ASSIGNMENT LIST UMR Pool 10
	3. Section	Operations	
4. Division/Group	Recovery & Rehabilitation		

5. Agencies Involved in Contain Release Group

Agencies that might play a role in Recovery and Rehabilitation Group:

- Responsible Party/Facility/Industry/Contractors
- Iowa Department of Natural Resources (IA DNR)
- Wisconsin Department of Natural Resources (WI DNR)
- US Fish and Wildlife Service (USFWS)

Agency General Roles and Responsibilities: Refer to the [Roles and Responsibilities](#) Table provided in this Incident Action Plan

6. Recommended Strategies and Tactics

- Establish Operations Section Wildlife Branch to respond to oiled wildlife.
- USFWS and/or state resource managers will implement the following Plans, as necessary:
 - “Wildlife Reconnaissance and Recovery Plan” to guide the finding and capture of oiled animals
 - “Wildlife Stabilization and Transport Plan” to provide initial veterinary care for recovered oiled wildlife and to transport animals to rehabilitation areas
 - “Wildlife Hazing Plan” if wildlife is attracted to oiled habitats
- USFWS and/or state resource managers will oversee wildlife rehabilitation according to the Wildlife Rehabilitation Plan.
- USFWS and/or state resource managers will manage the wildlife morgue.
- USFWS and/or state resource managers will salvage dead wildlife.
- USFWS and/or state resource managers will report location of oil, high wildlife use areas, and protection needs for sensitive natural resources.
- USFWS and/or state resource managers will provide daily update of number of dead and oiled wildlife.
- USFWS and/or state resource managers will order the necessary resources (supplies, equipment, and gear from the Logistics Section).

7. Incident-Specific Assignments

8. Special Instructions for Division/Group

9. Operations Personnel						
Title	Name	Affiliation	Emergency Contact #	Contact # (s)		
_____	_____	_____	_____	_____		
_____	_____	_____	_____	_____		
_____	_____	_____	_____	_____		
_____	_____	_____	_____	_____		
_____	_____	_____	_____	_____		

Communications: Refer to the [Pool 10 Emergency Contact List](#) provided in this Incident Action Plan

10. Resource Summary (see UMR Spill Response Plan and Resource Manual for information on Spill Response and Cleanup Resources)						
ID	Resource Type	Description/ Location	Quantity	Size	Status	Notes/ Comments
_____	_____	_____	_____	_____	_____	_____
_____	_____	_____	_____	_____	_____	_____
_____	_____	_____	_____	_____	_____	_____
_____	_____	_____	_____	_____	_____	_____
_____	_____	_____	_____	_____	_____	_____

11. Additional Information	

Prepared By: (Name/Title) _____	Date/Time: _____
Approved by: (Name/Title) _____	Date/Time: _____

9. Operations Personnel						
Title	Name	Affiliation	Emergency Contact #	Contact # (s)		
_____	_____	_____	_____	_____		
_____	_____	_____	_____	_____		
_____	_____	_____	_____	_____		
_____	_____	_____	_____	_____		
_____	_____	_____	_____	_____		

Communications: Refer to the [Pool 10 Emergency Contact List](#) provided in this Incident Action Plan

10. Resource Summary (see UMR Spill Response Plan and Resource Manual for information on Spill Response and Cleanup Resources)						
ID	Resource Type	Description/ Location	Quantity	Size	Status	Notes/ Comments
_____	_____	_____	_____	_____	_____	_____
_____	_____	_____	_____	_____	_____	_____
_____	_____	_____	_____	_____	_____	_____
_____	_____	_____	_____	_____	_____	_____
_____	_____	_____	_____	_____	_____	_____

11. Additional Information	

Prepared By: (Name/Title) _____	Date/Time: _____
Approved by: (Name/Title) _____	Date/Time: _____

Incident name:	Operational Period# 1			ICS – 205 INCIDENT COMMUNICATION PLAN UMR Pool 10
	From		To	

Position	Name	Phone	e-mail	Current Location
Incident Commander and Staff				
Incident Commander(s)				
Safety Officer				
Information Officer				
Liaison Officer				
Water Operations Section Chief				
Land-Source Section Chief				
Wildlife Branch Section Chief				
Logistics Section Chief				
Planning Section Chief				
Law Enforcement Section Chief				
Prepared By: (Name/Title)	_____		Date/Time:	_____
Approved By: (Name/Title)	_____		Date/Time:	_____

UMR POOL 10 EMERGENCY CONTACT LIST

NAME	ORGANIZATION	Emergency #	Office Phone	E-Mail	Other (Radio)
Local					
911					
Chris Dahlstrom	Allamakee County EM	911	563-568-4233	cdahlstrom@co.allamakee.ia.us	
Chance Kness	Clinton County EM	911	563-242-5712	ckness@clintoncounty-ia.gov	
Tom Berger	Dubuque County EM	911	563-589-4170	dbqema@yousq.net	
Roger Martin	Crawford County EM	911	608-326-0266	ccem@centurytel.net	
Steve Braun	Grant County EM	911/608-723-2157	608-723-7171		
Chief Bruce Harry Remz	Prairie du Chien Fire Dept.	911	608-326-4365	pdcfire@mhtc.net	
Chief Chad Esman	Guttenberg Fire Dept.	911	563-252-1161	gutfire@alpinecom.net	
	Harper's Ferry Fire Dept.	911	563-586-2556		
Private					
Jim Cunningham	BNSF Railroad	612- 817-1587	913- 551-3990	James.Cunningham@bnsf.com	
Michael Woolridge	BNSF Railroad	763-782-3483	612-845-2029	michael.woolridge@BNSF.com	
Chad Livingston	DM&E Railroad		563-441-5921	chad_livingston@cpr.ca	
State					
Wisconsin Duty Officer	WI D.O.	800-943-0003	608-242-3232		
Iowa Duty Officer	IA D.O.	515-281-8694	515-979-2200		
Field Office 1 Manchester	IA DNR	563-927-2640	563-927-2640		
Michael Griffin	IA DNR Wildlife		563-872-5700	michael.griffin@dnr.iowa.gov	
Mike Steuck	IA DNR Fisheries	563-590-3808	563-872-4976	michael.steuck@dnr.iowa.gov	
Tom Kendzierski	WI DNR West Central Spills Coordinator		715-839-1604	thomas.kendzierski@wisconsin.gov	
Cody Adams	WI DNR Cons. Warden		608-485-0108	Cody.Adams@wisconsin.gov	
Patrick Short	WI DNR Fish Biologist		608-326-8818	patrick.short@wisconsin.gov	
Federal					
National Response Center	NRC	1-800-424-8802	1-800-424-8802		
US Department of the Interior	DOI	215-266-5155	215-266-5155		
US EPA Region 5	EPA	312-353-2318	312-353-2318		
US EPA Region 7	EPA	913-281-0991	913-281-0991		
Lock Master LD9	USACE	608-874-4801	608-874-4801		Channel 14 (156.7 MHz)
Lock Master LD10	USACE	563-252-1261	563-252-1261		Channel 12 (156.6 MHz)
Sector Upper Mississippi River	USCG	1-866-360-3386	314-704-9502		
USCG Marine Safety Office	USCG	1-866-360-3386	612-725-1871		
Ann Whelan	EPA Region 5	312-802-1405	312-886-7258	Whelan.Ann@epamail.epa.gov	
Steve Faryan	EPA Region 5	312-802-0507	312-353-9351	faryan.steven@epa.gov	
Joe Davis	EPA Region 7		913-551-7909	davis.joe@epa.gov	
Randy Urich	USACE		507-895-6341	randall.r.urich@usace.army.mil	
Rich King, Refuge Mgr.	USFWS McGregor Dist.	608-387-2083	563-873-3423 x12	Richard_King@fws.gov	Primary Refuge contact
Clyde Male, Asst. Refuge Mgr.	USFWS McGregor Dist.	608-306-0485	563-873-3423 x23	Clyde_Male@fws.gov	
Nick Stavroplus, LE Officer	USFWS McGregor Dist.	608-306-0476	563-873-3423 x16	Nicholas_Stavroplus@fws.gov	
Sarah Warner	USFWS Env. Contam.	920-655-4974	608-238-9333 x130	Sarah_Warner@fws.gov	
Mike Coffey	USFWS Env. Contam.	563-508-4719	309-757-5800 x206	Michael_Coffey@fws.gov	
Dave Warburton	USFWS, Twin Cities		612-725-3548 x2203	Dave_Warburton@fws.gov	
Elissa Buttermore	USFWS, Twin Cities		612-725-3548 x2205	Elissa_Buttermore@fws.gov	
Jason Suckow	USDA APHIS WS, Wildlife Biologist		608-837-2727	jsuckow@aphis.usda.gov	
Rod Rovang	NPS Effigy Mounds		563-873-3491	Rodney_D_Rovang@nps.gov	

1. Incident name:	2. Operational Period# 1			ICS – 206 MEDICAL PLAN UMR Pool 10
	From		To	

3. First Aid Stations

Name	Location	EMT (On-Site)		Phone	Radio
		Yes	No		
		<input type="checkbox"/>	<input type="checkbox"/>		
		<input type="checkbox"/>	<input type="checkbox"/>		
		<input type="checkbox"/>	<input type="checkbox"/>		
		<input type="checkbox"/>	<input type="checkbox"/>		

4. Transportation (Ground and/or Ambulance Services)

Name	Location	EMT (On-Site)		Phone	Radio
		Yes	No		
		<input type="checkbox"/>	<input type="checkbox"/>		
		<input type="checkbox"/>	<input type="checkbox"/>		
		<input type="checkbox"/>	<input type="checkbox"/>		
		<input type="checkbox"/>	<input type="checkbox"/>		

5. Hospitals

Name	Location	Helipad		Burn Center		Phone	Radio
		Yes	No	Yes	No		
		<input type="checkbox"/>	<input type="checkbox"/>	<input type="checkbox"/>	<input type="checkbox"/>		
<input type="checkbox"/>	<input type="checkbox"/>	<input type="checkbox"/>	<input type="checkbox"/>	<input type="checkbox"/>	<input type="checkbox"/>		
<input type="checkbox"/>	<input type="checkbox"/>	<input type="checkbox"/>	<input type="checkbox"/>	<input type="checkbox"/>	<input type="checkbox"/>		
<input type="checkbox"/>	<input type="checkbox"/>	<input type="checkbox"/>	<input type="checkbox"/>	<input type="checkbox"/>	<input type="checkbox"/>		

6. Special Medical Emergency Procedures

Prepared By: (Name/Title) _____	Date/Time: _____
Approved by: (Name/Title) _____	Date/Time: _____

1. Incident name: _____	2. Operational Period# 1			ICS – 223 HEALTH AND SAFETY MESSAGE UMR Pool 10
	From	_____	To	

3. Potential Hazards

4. General Safety Concerns

5. Additional Information

Prepared By: (Name/Title) _____	Date/Time: _____
Approved by: (Name/Title) _____	Date/Time: _____

